
Academy for the Middle Years

A.M.Y. Northwest



Welcome Future AMY NW
BULLDOGS





VISION

To graduate all students with the skills they will need to be accepted and successful in a high school of their choice

Mission Statement

Students and staff work collaboratively at AMY NW through supporting and encouraging each other to become socially responsible, self-disciplined agents of change. Our rigorous curriculum promotes an anti-racist community, intellectual curiosity, creative thinking, and challenges students to meet their full potential.

We Believe:



- The academic achievement and social emotional growth of each student is our primary goal.
- Learning is a lifelong process.
- Education is a shared responsibility among students, family, school staff, and community.
- School staff serve as role models of professionalism, integrity, commitment and ethical behavior through visionary leadership to promote sustainable skill sets for future success.
- Every student is a valuable part of the AMY NW community able to make positive contributions.
- Students learn in different ways and at different rates. A respectful and safe school environment contributes to educational and social GROWTH for all.
- Students develop self-esteem through compassionate, respectful relationships with caring adults and meaningful experiences in school and the community.

Academics

- All courses taught by teachers Highly Qualified in the subjects
 - Reading, Writing, Math, Science, Social Studies, Art, Music, Physical Education and Health
- 8th Grade Algebra for students who qualify
- Smart Boards in every classroom for interactive learning
- 1:1 Chromebooks

Focus on Literacy

- All students should have an independent reading book at all times.
- 2x a week we will have independent reading time in homeroom
- We will also have at least one whole school book read as an additional book to anything they may be reading in ELA class at the time.

HERE'S THE IMPACT OF READING 20 MINUTES PER DAY!

A student who reads

20:00

minutes per day

will be exposed to
1.8 MILLION
words per year
and is more likely
to score in the
90th PERCENTILE
on standardized tests

A student who reads

5:00

minutes per day

will be exposed to
282,000
words per year
and is more likely
to score in the
50th PERCENTILE
on standardized tests

A student who reads

1:00

minute per day

will be exposed to
8,000
words per year
and is more likely
to score in the
10th PERCENTILE
on standardized tests

Source: Nagy, Anderson and Herman, 1987

Social Emotional Learning

- Community Meetings
- Restorative Justice Circles
- Youth Court
- 7 Mindsets



PBIS

Students have the opportunity to earn PBIS Points to use in

- The Bulldog Shop
 - Join Incentives like
 - Dances
 - Lip sync battles
 - Escape rooms
 - Trips
- And MORE!



PBIS REWARDS APPS

The PBIS Rewards apps are available on Google Play, the App Store, and Amazon Apps.



Students - download the app!



Arrival and Dismissal

- **First period begins at 7:30am**
 - PLEASE arrive BEFORE 7:30!!
 - BREAKFAST begins at 7:00 in the cafeteria
- **The school day ends at 2:34pm**
 - Students will be dismissed through their designated door.
 - Crossing Guards and school personnel are outside to see the students safely to their transportation.
 - Bus students are expected to get on their preferred bus and head home directly after school.
 - We ask parents to pick up and drop off on Monastery Street, there is a traffic light and crossing guard there.

Breakfast and Lunch

- Universal Free Breakfast and Lunch
 - Breakfast is available from 7am - 7:25am
 - Full Service Kitchen
-
- We will once again be a full service kitchen next year.
 - Students will have the opportunity to select from several breakfast and lunch options daily.
 - Smoothies, breakfast sandwiches, cereal, french toast
 - Tacos, pizza, salad, chicken



Transportation

Every student that lives more than 1 ½ mile away from school (and does not have school district transportation in place via an IEP) will be supplied with a TRANSPASS. Please note that new this year, transpasses will be yearly.

- Students are entitled to ONE transpass. Please have backup in case a transpass is lost.
- 65 Charter stops on the corner of Ridge and Gerhard to take only AMY students to Germantown and Chelton
- 9, 32 and K are common buses that our students take close to the school building.
- YELLOW BUS services are only for those students who have transportations needs written into their Individual Education Plan and are moved here out of their neighborhood catchment

AMY Northwest Uniform Information

Tops- Light Blue Tops - Polo, Dress Shirt, any A.M.Y. Top including the A.M.Y. Sweatshirt or hoodie

Bottoms - ANY School Appropriate Bottoms

PE Uniform - AMY T-shirt, sweatpants, sweatshirt or shorts when weather permits



PE uniform... sold at AMY



Clubs, Sports and The Arts

CLUBS

- Academic Tutoring
- Hydroponic Gardening
- Mentoring Groups
- Student Government
- Model United Nations
- Art Club
- Game Club
- Chess
- Entrepreneurship Club
- Science Fair
- Healthy News Works- Newspaper

SPORTS

- Basketball
- Track and Field
- Volleyball
- Softball

MUSIC

- Instrumental Lessons and Ensemble
 - Orchestra
 - Band
- Choir
- Guitar and Keyboard Club

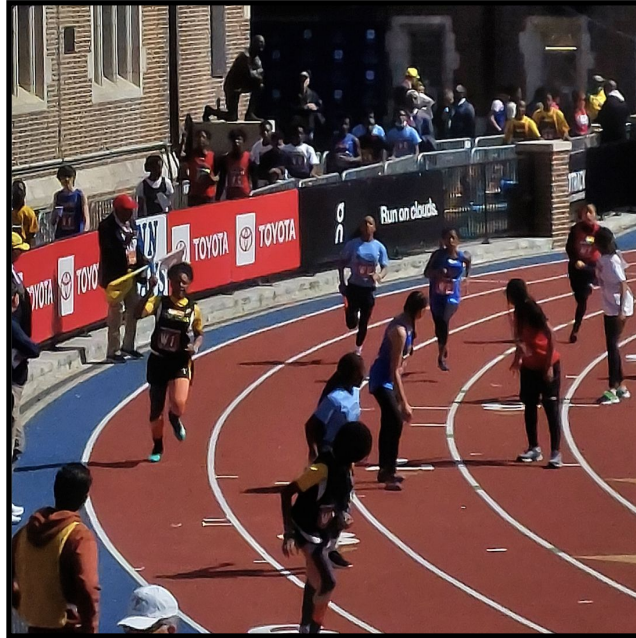
We are always excited to start new clubs and programs. If you have an interest please let us know and we will work to get it started!!

Sports Offered at AMY NW

- Boys Basketball
- Girls Basketball
- Boys Track
- Girls Track
- Girls Volleyball
- Girls Softball

Sports

AMY Northwest's Athletics provide students with more after school activities!





Hydroponic Gardening



Art Museum



School Events

Talent Show

Field Day

Spirit Week

Pi Day

Mathmas



AMY NW Project - Student created about A.M.Y.

<https://www.youtube.com/watch?v=bCrd8EpYLPU>

Electives

AMY NW students choose from a variety of electives to attend weekly to support their interests.



Electives Currently Offered at AMY NW

- Crochet
- Building
- Guitar
- Drama Club
- Creative Writing
- Arabic
- Stock Market Club
- Small Animal Care
- Magic
- Watercolor
- Chess
- Volleyball
- Knitting
- Vocal Music
- Canva and Cricut
- Scrabble
- Women's Fitness

Incentive Activities



Classwork

Special Programs



Canned Food Drive

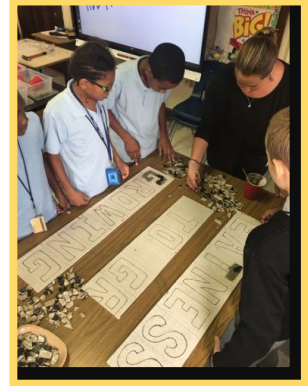


Parent Workshops / Events

- STEAM Mystery Night
- First Time Home Buyers
- Mindset



Special School Wide Projects



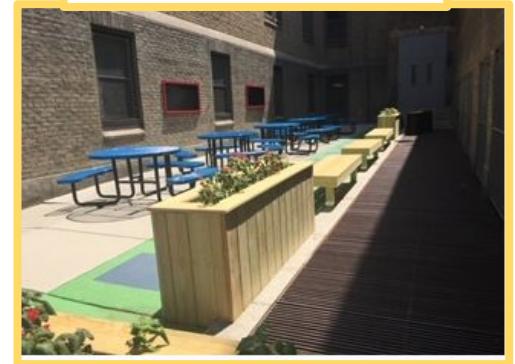
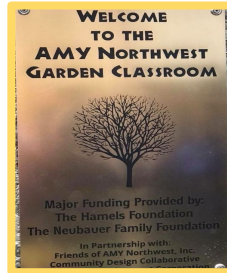
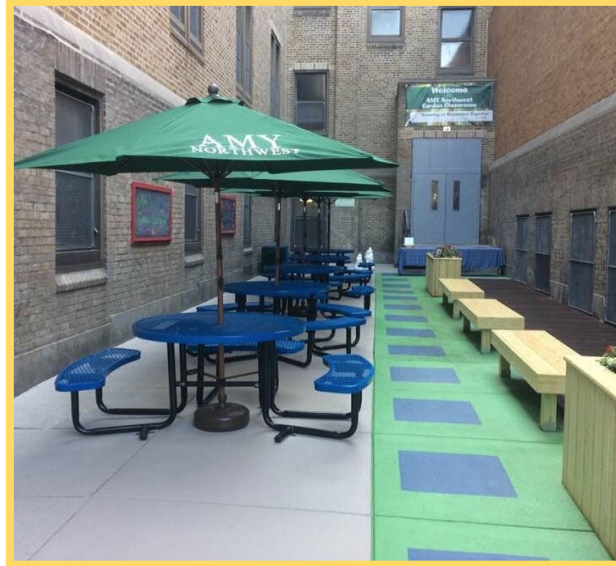
School Yard Project

Remainder of the school yard - Trust for Public Land



School Yard Project

Outdoor Classroom One - Hamels Foundation & the Neubauer Family Foundation



School Yard Project- In Progress





Lets keep in touch!

- You can always find out what is going on by keeping an eye on our website at **amynw.philasd.org** (the site is currently being updated, however basic information is there)
- Some important emails to have...
 - Principal - Mrs. Floyd jnfloyd@philasd.org
 - School Based Leader - Mrs. Hettel - khettel@philasd.org
 - Counselor - Mrs. Blanco lblanco@philasd.org
 - Special Education Manager - Mrs. Domers
mdomers@philasd.org
- School phone number - 215-400-3460

**We are excited to have you be a part
of the AMY Northwest Family!**

