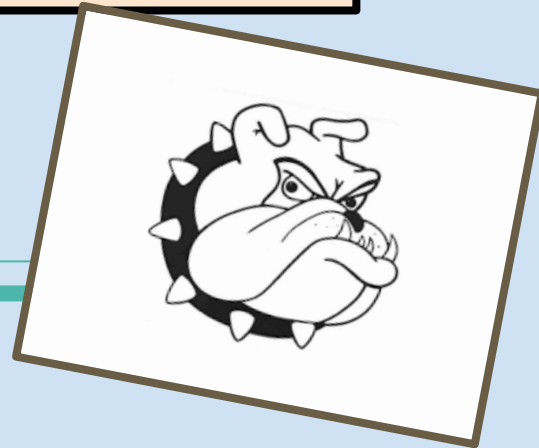




AMY Northwest

Welcome New Bulldogs!



PBIS

Students have the opportunity to earn PBIS Points to use in

- The Bulldog Shop
 - Join Incentives like
 - Dances
 - Lip sync battles
 - Escape rooms
 - Trips
- And MORE!



PBIS REWARDS APPS

The PBIS Rewards apps are available on Google Play, the App Store, and Amazon Apps.



Students - download the app!



AMY NORTHWEST BULLDOGS

Be Ready

Be Responsible

Be Respectful



Cell Phones

- ★ Cell Phones are not permitted as a part of the normal school day at AMY NW.
- ★ Every class has a cell phone locker where phones are locked during advisory and then returned at the close of the school day.
- ★ If students need to get in touch with families during the school day they can do so in the main office and families can get in touch with students the same way if there is an emergency



Focus on Literacy

- ★ All students should have an independent reading book at all times.
- ★ 1x a week we will have independent reading time in homeroom
- ★ We will also have at least one whole school book read as an additional book to anything they may be reading in ELA class at the time.

HERE'S THE IMPACT OF READING 20 MINUTES PER DAY!

A student who reads

20:00

minutes per day

will be exposed to
1.8 MILLION
words per year
and is more likely
to score in the
90th PERCENTILE
on standardized tests

A student who reads

5:00

minutes per day

will be exposed to
282,000
words per year
and is more likely
to score in the
50th PERCENTILE
on standardized tests

A student who reads

1:00

minute per day

will be exposed to
8,000
words per year
and is more likely
to score in the
10th PERCENTILE
on standardized tests

Source: Nagy, Anderson and Herman, 1987

 **SCHOLASTIC**

Electives

AMY NW students choose from a variety of electives to attend weekly to support their interests.



Electives Currently Offered at AMY NW

- Crochet
- Building
- Guitar
- Drama Club
- Creative Writing
- Arabic
- Stock Market Club
- Small Animal Care
- Magic
- Watercolor
- Chess
- Volleyball
- Knitting
- Vocal Music
- Canva and Cricut
- Scrabble
- Women's Fitness

Art Museum

AMY Northwest has been chosen as the only SDP school to continue their partnership with the Art Museum of Philadelphia!

Installation of student work at Ronald McDonald House made in collaboration with Delphi AfterSchool Art Club



Music

AMY NW recognizes the value of music for student well-being with a variety of musical activities to participate in.

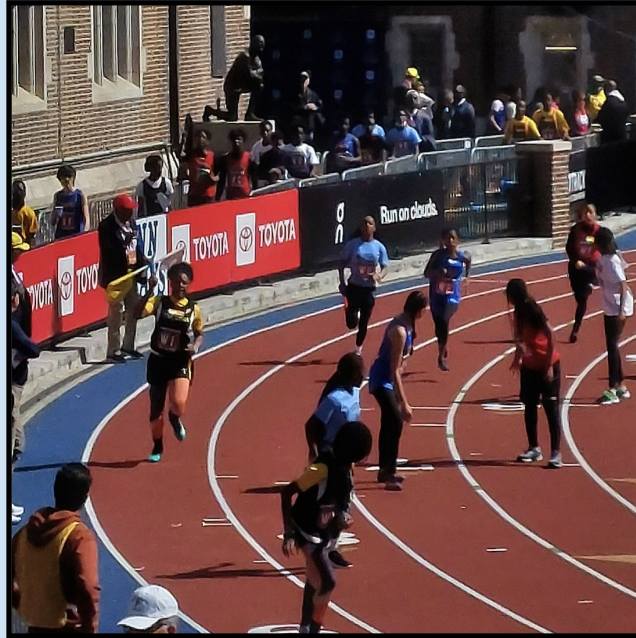


Sports Offered at AMY NW

- Boys Basketball
- Girls Basketball
- Boys Track
- Girls Track
- Girls Volleyball
- Girls Softball

Sports

AMY Northwest's Athletics provide students with more after school activities!



Breakfast and Lunch

We are a Full Service Kitchen!

Students will have the opportunity to select from several breakfast and lunch options daily.

- ★ Smoothies, breakfast sandwiches, cereal, french toast
- ★ Tacos, pizza, salad, chicken



AMY Northwest Uniform Information



Daily Uniform

★ Tops

- Light Blue Polo shirt or
- Any A.M.Y. Tops: T-shirts, Sweatshirts, Spirit wear, etc.

★ Bottoms

- Any solid colored school appropriate bottoms
 - No Pajamas please

P.E. Uniform - A.M.Y. PE uniform

**P.E. Uniforms and T-shirts Can Be Purchased at School
August 6th - August 20th**

Arrival and Dismissal

★ **First period begins at 7:30am**

- PLEASE arrive BEFORE 7:30!!
- BREAKFAST begins at 7:00 in the cafeteria

★ **The school day ends at 2:34pm**

- Students will be dismissed through their designated door.
- Crossing Guards and school personnel are outside to see the students safely to their transportation.
- Bus students are expected to get on their preferred bus and head home directly after school.
- We ask parents to pick up and drop off on Monastery Street, there is a traffic light and crossing guard there.

Communications

★ Folder

- Will go home daily with one side labeled bring home and the other bring back to school.

★ Remind

- Will be send home in August for you to join. This is a text app.

★ Website

- Will undergo revisions and upgrades over the summer.

★ Instagram

- Coming soon!



Family Involvement

- ★ **Parent Portal**
 - If you do not have an account go to the SDP webpage to make one.
- ★ **Back to School Night**
- ★ **School Advisory Council**
- ★ **Home and School**
- ★ **Surveys**



First Day of School Procedures

- Students will meet in the school yard (behind the school, to be accessed on Monastery St.) between 7:00 - 7:30 am.
 - ◆ Tables will be set up with class lists and staff to assist you
 - ◆ Homeroom teachers will be holding a sign with their homeroom number to gather students.
- Parents will say goodbye in the school yard after reminding students of their travel plan home.
- Students will be dismissed from their designated door.
 - ◆ Students will either be dismissed from the annex into the school yard or out the front door onto Gerhard St.

Summer “TO DO” list...

→ Summer Reading

- ◆ Please check our website at amynw.philasd.org for summer reading assignments. They will be posted by June 20th

→ Summer Bridge Workbook

- ◆ Complete 15 min a day of the summer bridge workbook.

→ Summer Math

- ◆ Please check our website at amynw.philasd.org for summer math assignments. They will be posted by June 20th
- ◆ Get your Physicals and PIAA forms if you want to participate in sports

→ Download the PBIS Rewards App

→ Plan to attend the New to AMY Meet and Greet August 14th.



HAVE A WONDERFUL SUMMER!!

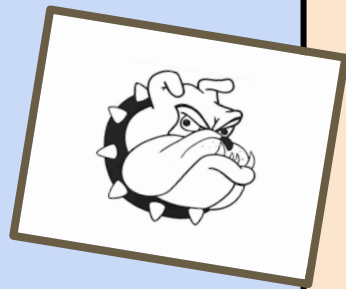


New Student Meet & Greet

Save the Date: August 14, 2024

9:00 am - 12:00 pm

Join us for activities, breakfast and information!



9:00- drop off students and check them in

Student Pick-up: 12:00 pm in the Schoolyard

We can't wait to meet you!

Let's Keep in Touch!

- You can always find out what is going on by keeping an eye on our website at **amynw.philasd.org** or on Facebook at Amy NW Middle.
- Some important emails to have...
 - ◆ Principal - Mrs. Floyd jnfloyd@philasd.org
 - ◆ School Based Leader - Mrs. Hettel - khettel@philasd.org
 - ◆ Counselor - Mrs. Blanco lblanco@philasd.org
 - ◆ Special Education Manager - Mrs. Domers
mdomers@philasd.org
- School phone number - 215-400-3460